



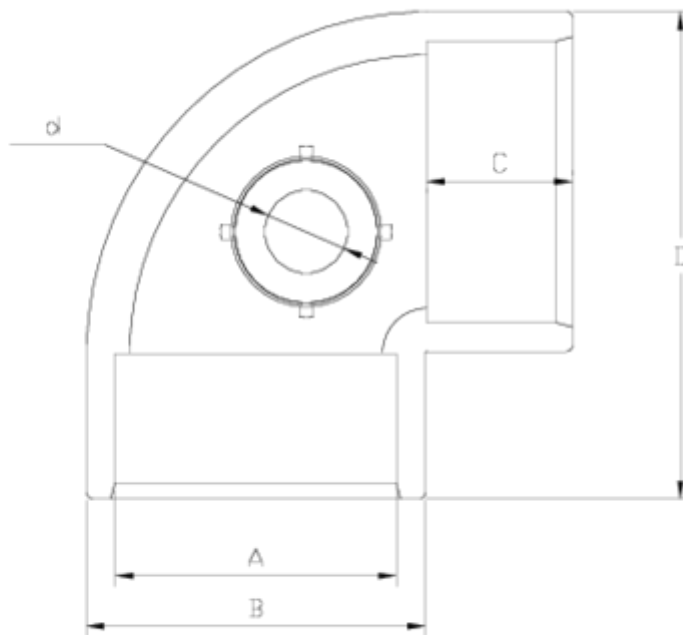
## PVC pressure fittings

### "AIR L" 90° elbow, female threaded outlet ITEM 206



| Ref.    | Description                       | Net W. | Vol. (m <sup>3</sup> ) | Gross W. | Batch |
|---------|-----------------------------------|--------|------------------------|----------|-------|
| 1001615 | CODO 90° ENC "AIR-L" S/RH 50-1/2" | 0,162  | 0,02244                | 5,35     | 30    |
| 1001616 | CODO 90° ENC "AIR-L" S/RH 63-1/2" | 0,297  | 0,03129                | 9,48     | 30    |
| 1001617 | CODO 90° ENC "AIR-L" S/RH 75-1/2" | 0,469  | 0,04717                | 12,36    | 25    |
| 1001619 | CODO 90° ENC-RH AIR-L RH 90-3/4"  | 0,756  | 0,03682                | 8,11     | 10    |
| 1001623 | CODO 90° ENC-RH AIR-L RH 110-1"   | 1,256  | 0,04880                | 13,14    | 10    |
| 1001613 | CODO 90° ENC "AIR-L" S/RH 50-3/4" | 0,169  | 0,02243                | 5,55     | 30    |
| 1001614 | CODO 90° ENC "AIR-L" S/RH 63-3/4" | 0,297  | 0,03129                | 8,95     | 30    |





## ITEM 206 | "AIR L" 90° elbow, female threaded outlet

| Código | A   | d    | Peso (g) | B   | C  | D   | PN   | MEDIDA |
|--------|-----|------|----------|-----|----|-----|------|--------|
| 01615  | 50  | 1/2" | 148      | 61  | 31 | 88  | PN10 | BSP    |
| 01613  | 50  | 3/4" | 152      | 61  | 31 | 88  | PN10 | BSP    |
| 01616  | 63  | 1/2" | 235      | 76  | 38 | 109 | PN10 | BSP    |
| 01614  | 63  | 3/4" | 240      | 76  | 38 | 109 | PN10 | BSP    |
| 01617  | 75  | 1/2" | 455      | 90  | 44 | 130 | PN10 | BSP    |
| 01619  | 90  | 3/4" | 815      | 108 | 51 | 151 | PN10 | BSP    |
| 01623  | 110 | 1"   | 1265     | 143 | 61 | 184 | PN10 | BSP    |