

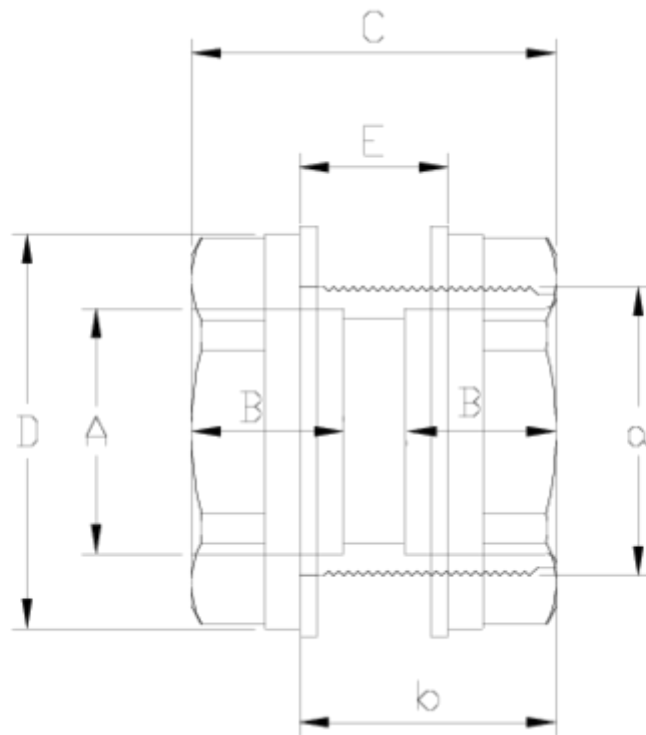


## PVC pressure fittings

### Tank adaptor ITEM 406

| Ref.    | Description                   | Net W. | Vol. (m <sup>3</sup> ) | Gross W. | Batch |
|---------|-------------------------------|--------|------------------------|----------|-------|
| 1002780 | PASAMUROS 20-1" PVC EPDM      | 0,0775 | 0,00891                | 2,44     | 30    |
| 1002772 | PASAMUROS 25-1" PVC EPDM      | 0,070  | 0,00892                | 2,31     | 30    |
| 1002773 | PASAMUROS 32-1 1/4" PVC EPDM  | 0,120  | 0,01553                | 3,97     | 30    |
| 1002774 | PASAMUROS 40-2" PVC EPDM      | 0,275  | 0,00892                | 4,60     | 16    |
| 1002775 | PASAMUROS 50-2" PVC EPDM      | 0,204  | 0,00892                | 3,49     | 16    |
| 1002777 | PASAMUROS 75-3" PVC EPDM      | 0,428  | 0,01553                | 2,90     | 6     |
| 1002778 | PASAMUROS 90-4" PVC EPDM      | 1,044  | 0,01553                | 6,59     | 6     |
| 1002781 | PASAMUROS 20-1" PVC VITON     | 0,080  | 0,00891                | 2,59     | 30    |
| 1002782 | PASAMUROS 25-1" PVC VITON     | 0,070  | 0,00892                | 2,32     | 30    |
| 1002783 | PASAMUROS 32-1 1/4" PVC VITON | 0,125  | 0,01553                | 4,12     | 30    |
| 1002784 | PASAMUROS 40-2" PVC VITON     | 2,773  | 0,00892                | 44,55    | 16    |
| 1002785 | PASAMUROS 50-2" PVC VITON     | 0,206  | 0,00892                | 3,49     | 16    |
| 1002787 | PASAMUROS 75-3" PVC VITON     | 0,427  | 0,01553                | 2,95     | 6     |
| 1002788 | PASAMUROS 90-4" PVC VITON     | 1,026  | 0,01553                | 6,58     | 6     |





## ITEM 406 | Tank adaptor

| Codigo | A-a         | Peso (g) | DN | B  | b  | C   | D   | E  | MATERIAL | PN   | ROSCA |
|--------|-------------|----------|----|----|----|-----|-----|----|----------|------|-------|
| 02780  | 20-1"       | 79       | 15 | 16 | 47 | 62  | 50  | 38 | EPDM     | PN10 | BSP   |
| 02772  | 25 -1"      | 76       | 20 | 19 | 47 | 62  | 50  | 38 | EPDM     | PN10 | BSP   |
| 02773  | 32 - 1 1/4" | 112      | 25 | 21 | 53 | 69  | 64  | 33 | EPDM     | PN10 | BSP   |
| 02774  | 40 - 2"     | 275      | 32 | 26 | 53 | 74  | 81  | 30 | EPDM     | PN10 | BSP   |
| 02775  | 50 - 2"     | 208      | 40 | 31 | 53 | 74  | 81  | 30 | EPDM     | PN10 | BSP   |
| 02777  | 75-3"       | 410      | 65 | 44 | 78 | 104 | 108 | 52 | EPDM     | PN10 | BSP   |
| 02778  | 90-4"       | 890      | 80 | 51 | 90 | 120 | 140 | 60 | EPDM     | PN10 | BSP   |
| 02781  | 20-1"       | 79       | 15 | 16 | 47 | 62  | 50  | 38 | VITON    | PN10 | BSP   |
| 02782  | 25 - 1"     | 76       | 20 | 19 | 47 | 62  | 50  | 38 | VITON    | PN10 | BSP   |
| 02783  | 32 - 1 1/4" | 112      | 25 | 21 | 53 | 69  | 64  | 33 | VITON    | PN10 | BSP   |



## ITEM 406 | Tank adaptor

|       |         |     |    |    |    |     |     |    |       |             |     |
|-------|---------|-----|----|----|----|-----|-----|----|-------|-------------|-----|
| 02784 | 40 - 2" | 275 | 32 | 26 | 53 | 74  | 81  | 30 | VITON | <b>PN10</b> | BSP |
| 02785 | 50 - 2" | 208 | 40 | 31 | 53 | 74  | 81  | 30 | VITON | <b>PN10</b> | BSP |
| 02787 | 75-3"   | 410 | 65 | 44 | 78 | 104 | 108 | 52 | VITON | <b>PN10</b> | BSP |
| 02788 | 90-4"   | 890 | 80 | 51 | 90 | 120 | 140 | 60 | VITON | <b>PN10</b> | BSP |