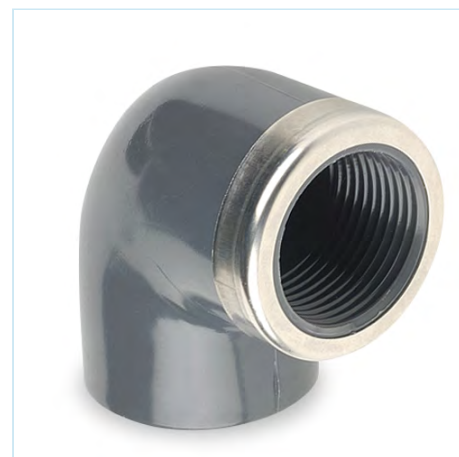




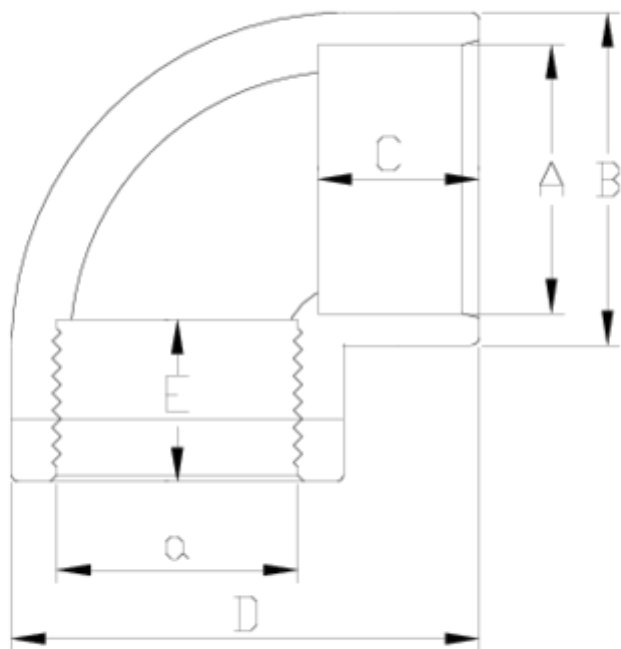
## PVC pressure fittings

### 90° elbow, reinforced female threaded outlet 1 ITEM 433



Ref.	Description	Net W.	Vol. (m <sup>3</sup> )	Gross W.	Batch
1002160	CODO 90° ENC-R/H REF 20-1/2"	0,025	0,00892	2,66	100
1002161	CODO 90° ENC-R/H REF 25-3/4"	0,045	0,00892	4,64	100
1002162	CODO 90° ENC-R/H REF 32-1"	0,070	0,02244	7,54	100
1002163	CODO 90° ENC-R/H REF 40-1 1/4"	0,127	0,03129	13,25	100
1002164	CODO 90° ENC-R/H REF 50-1 1/2"	0,173	0,04717	17,97	100
1002165	CODO 90° ENC-R/H REF 63-2"	0,309	0,04717	16,11	50
1002061	CODO 90° ENC-R/H REF 75-11/2"	0,624	0,03129	12,48	20
1002062	CODO 90° ENC-R/H REF 75-2"	0,580	0,03129	11,61	20
1002166	CODO 90° ENC-R/H REF 75-2 1/2"	0,456	0,04880	14,44	30
1002063	CODO 90° ENC-R/H REF 90-2"	0,910	0,03680	11,61	12
1002064	CODO 90° ENC-R/H REF 90-2 1/2"	1,020	0,03680	12,92	12
1002167	CODO 90° ENC-R/H REF 90-3"	0,861	0,04836	16,17	18





## ITEM 433 | 90° elbow, reinforced female threaded outlet 1

Código	A-a	Peso (g)	B	C	D	E	PN	ROSCA
02160	20-1/2"	32	27	16	41	16	PN10	BSP
02161	25-3/4"	45	33	19	50	17	PN10	BSP
02162	32-1"	79	41	22	61	21	PN10	BSP
02163	40-1 1/4"	134	50	26	74	23	PN10	BSP
02164	50-1 1/2"	163	61	31	88	24	PN10	BSP
02165	63-2"	296	75	38	109	28	PN10	BSP
02061	75-1 1/2"	614	89	44	129	24	PN10	BSP
02062	75-2"	589	89	44	129	28	PN10	BSP
02166	75-2 1/2"	452	89	44	129	32	PN10	BSP
02063	90-2"	1070	108	51	156	28	PN10	BSP



## ITEM 433 | 90° elbow, reinforced female threaded outlet 1

02064	90-2 1/2"	1025	108	51	156	32	PN10	BSP
02167	90-3"	861	108	51	156	35	PN10	BSP



Pol. Ind. Pla Vallonga,  
c/ Agua, 28  
03006 ALICANTE (España)



+34 965 11 42 82



+34 965 11 48 62  
tecnicocomercial@hidroten.es



Technical &  
Commercial Service  
+ 34 965 103 888

ООО «КОМСТЕТ»

+7 (812) 240-29-01 • KOMSTET.RU • INFO@KOMSTET.RU

HIDROTEN

